

Nature Conservation Review

for the proposed

"Portland Harbour Fishery Order 2019"



version 20th February 2019

1. Introduction

This technical note considers those designated sites and species not discussed in the Habitat Regulations Assessment and a review of potential impacts associated with Proposed Portland Harbour Fishery Order on these sites and species.

Relevant documentation includes:

- Portland Harbour Fishery Order
- Management plan
- Habitat Regulation Assessment

This report includes the following sections:

1	Introduction
2	Marine & Coastal Access Act 2009
3	Wildlife and Countryside Act 1981 (as amended)
4	Habitats of Principal Importance/ Priority Habitat
5	Details of the Plan, Activities and Pressures
6	Mitigation/ Measure

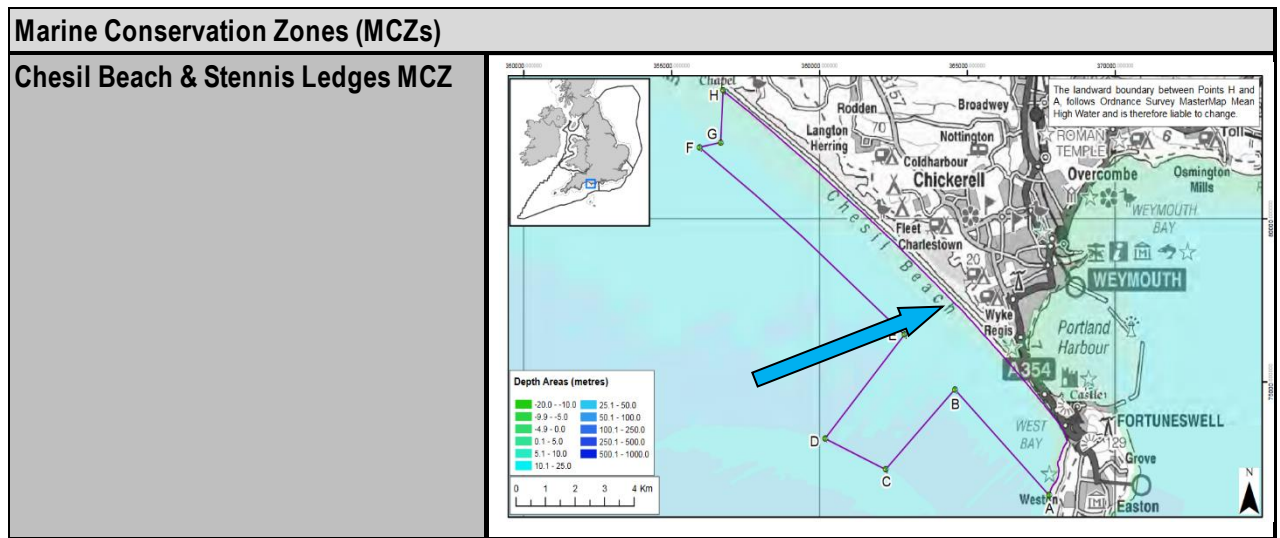
Figure 1 shows Portland Harbour Authority's jurisdiction as defined by the Portland Harbour Revision Order. This is the same area that is subject to the application for the Portland Harbour Several Order. It also shows Sites of Special Scientific Interest which are the subject of this report. European sites and Sites of Local Nature Conservation Importance are also shown but not the subject of this report.

A primary source of information is sourced from the following website:
<https://designatedsites.naturalengland.org.uk/SiteSearch.aspx>.

2. Marine & Coastal Access Act 2009

Chesil Beach and Stennis Ledges Marine Conservation Zone is located within 2km of the proposed site however the Chesil Beach forms a physical barrier between the MCZ and Portland Harbour. There is therefore no pathway by which activities potentially associated with the proposed Fishery Order could have an impact. Any fishing activity resulting from this Order therefore would not hinder the conservation objectives of such a site. The location of the MCZ in relation to Portland Harbour is shown in **Figure 2i** below and information about the site is included in **Table A** at the end of this document.

Figure 2i. Chesil Beach and Stennis Ledges Marine Conservation Zone in relation to Portland Harbour



3. Wildlife and Countryside Act 1981 (as amended)

The following series of tables include details of Sites of Special Scientific Interest (SSSI's) and their proximity to Portland Harbour.

Figure 3i. Chesil & The Fleet SSSI

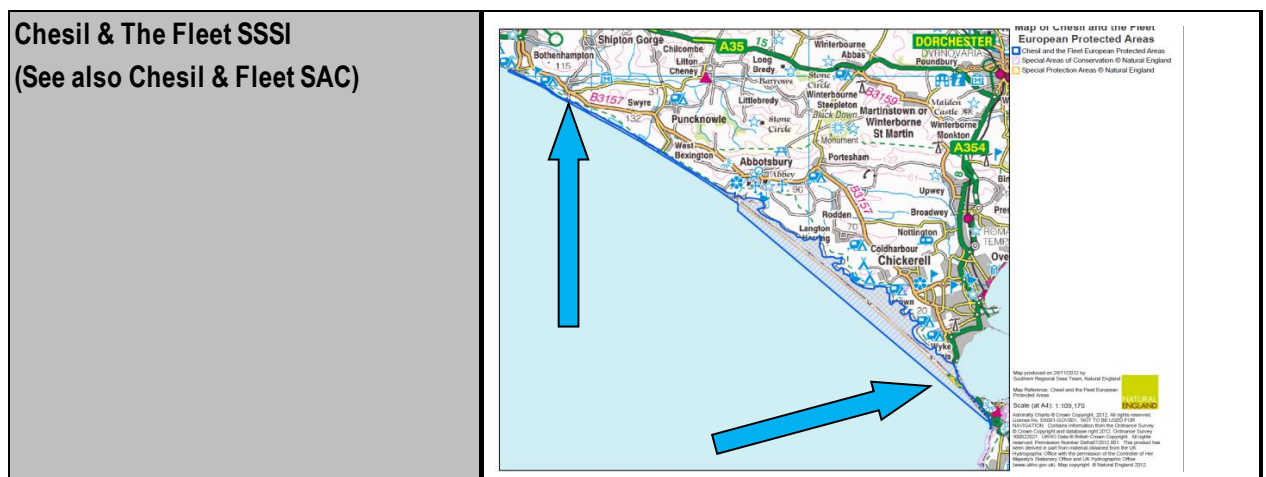


Figure 3ii. Portland Harbour Shore SSSI



Figure 3iii. South Dorset SSSI

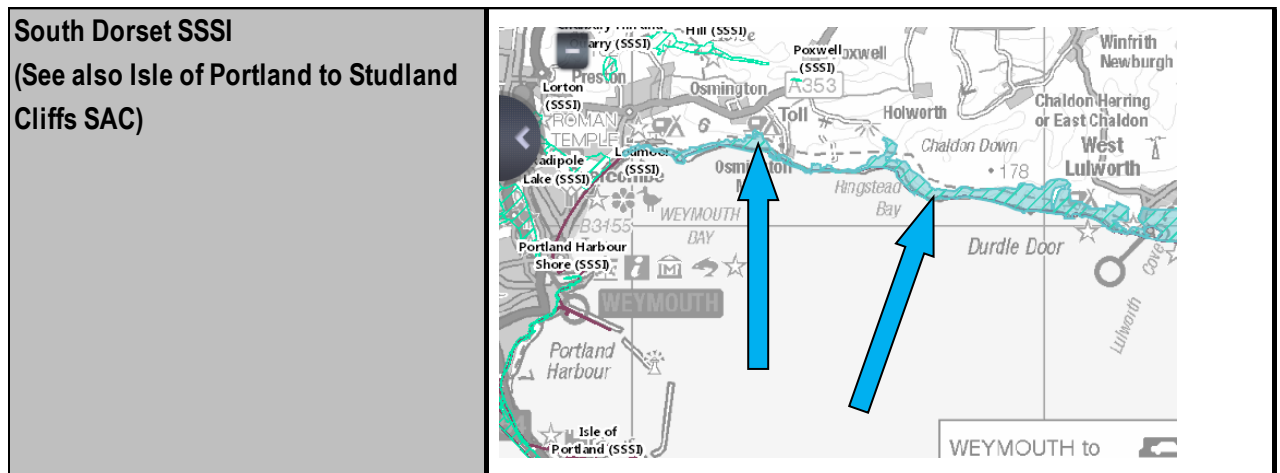
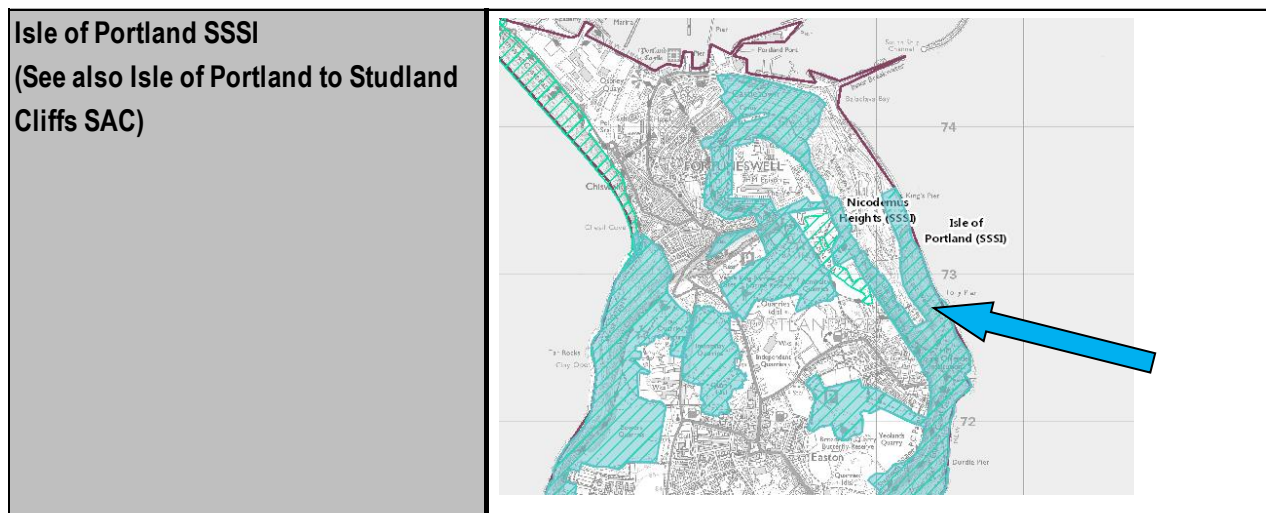


Figure 3iv. Isle of Portland SSSI



Further details on the above Sites of Special Scientific Interest can also be found in **Table A**.

Armandia cirrhosa, Lagoon Sandworm (<https://www.marlin.ac.uk/species/detail/1160>), and the Long Snouted (or Spiny) Seahorse *Hippocampus guttulatus* (<https://www.marlin.ac.uk/species/detail/1891>), are present in Portland Harbour. Further details are included in **Table A**. Both species are protected under Schedule 5, Section 9 of the Wildlife and Countryside Act 1981 (as amended). They are also a Species of Principal Importance in England.

In the case of the SSSI's and protected species mentioned above there are potential pathways by which an activity associated with this proposed Fishery Order could have an impact.

4. Habitats of Principal Importance/ Priority Habitat

Seagrass beds (*Zostera* spp.) is listed on Section 41 of the Natural Environment and Rural Communities Act 2006 as Habitats of Principal Importance for Conservation of Biodiversity in England, and on the OSPAR list of threatened and/or declining habitats in need of protection are also a consideration. Further details on this habitat is included in **Table A**.

Philine aperta and *Virgularia mirabilis* in soft stable infralittoral mud (SS.SMu.IFiMu.PhiVir) and Seapens and burrowing megafauna in circalittoral fine mud (SS.SMu.CFiMu.SpnMeg) are also located within the harbour. Of potential relevance, 'Mud habitats in deep water' are a Habitat of Principal Importance.

In the case of the above habitats there are potential pathways by which an activity associated with this proposed Fishery Order could have an impact.

5. Details of the Plan, Activities and Pressures

Table B includes a list of tables from the Habitat Regulations Assessment that are also relevant to this nature conservation review.

Table B – List of tables from the Habitat Regulations Assessment that are also relevant to the Nature Conservation Review	
Part A	
Table A2	Details of the plan or project
Table A2i	Activities relevant to Extraction of Living Resources
Table A2ii	Activities relevant to Production of Living Resources
Table A2iii	Pressures relevant to activities associated with Extraction of Living Resources
Table A2iv	Pressures relevant to activities associated with Production of Living Resources

In terms of an explanation, the following points are relevant:

- **Table A2**
 - Includes details about what in this case is considered to be a 'Plan'.
- **Table A2i, A2ii, A2iii and A2iv –**
 - the 'JNCC Pressures-Activities Database' (see <http://jncc.defra.gov.uk/default.aspx?page=7136>) has been consulted in order to populate these tables
 - the following categories have been identified as being relevant to fisheries:
 - Extraction of Living Resources
 - Production of Living Resources
 - 'Activities' relevant to each of these categories are listed in **Tables A2i and A2ii**
 - 'Pressures' relevant to these activities have also been listed and can be found in **Tables A2iii and A2iv**
 - In the case of both activities and pressures these are reflective of fishery activity in a more general sense and do not necessarily reflect what would actually take place.

6. Mitigation/ Measures

Due to the potential pathways by which an activity associated with this proposed Fishery Order could have an impact on sites and species an applicant will be required to demonstrate to the harbour authority that their proposals are environmentally acceptable taking account of designated habitats and species including those described in this report in order to secure a lease or licence.

Figure 1 – Portland Harbour Authority Jurisdiction and Nature Conservation Sites

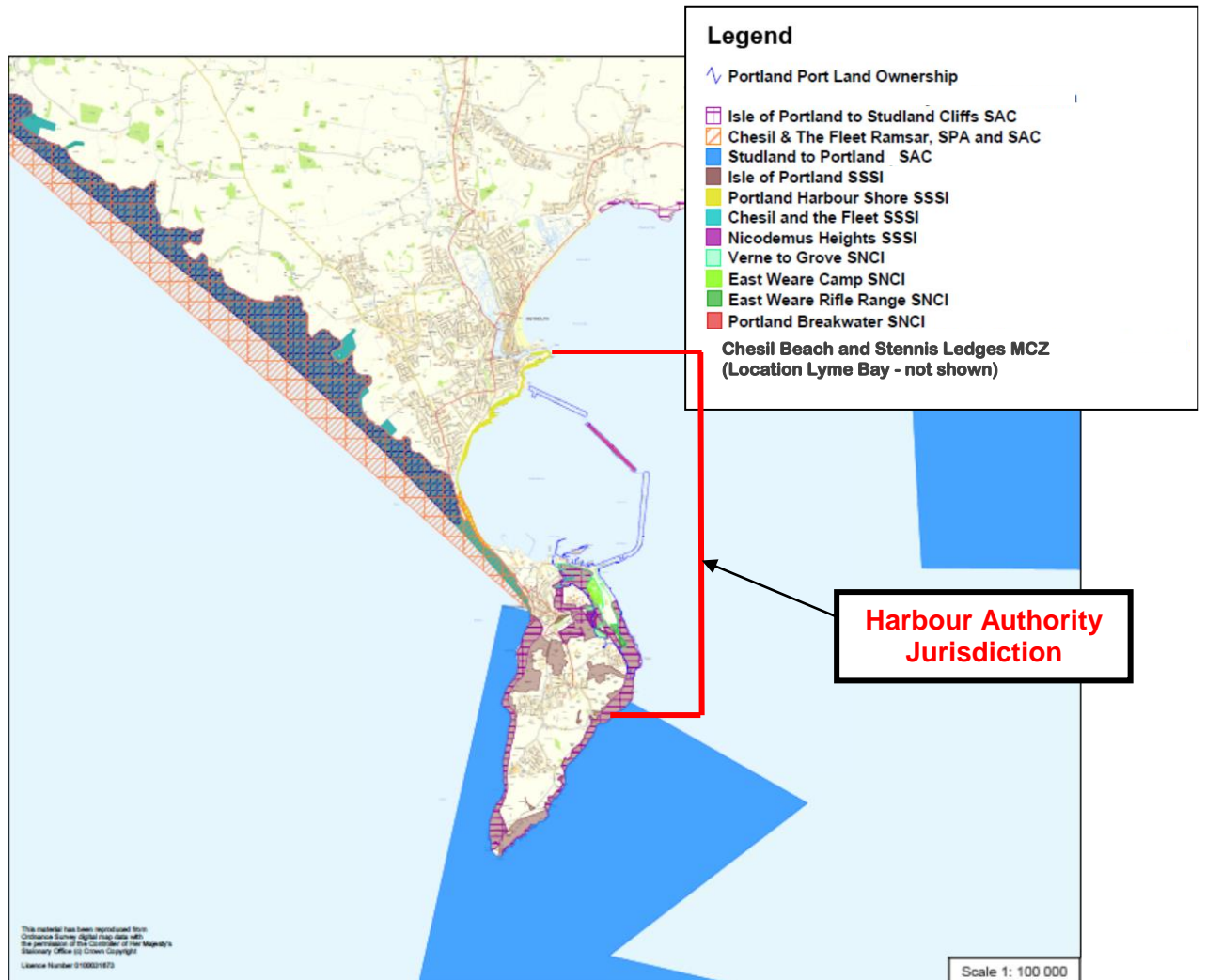


Table A

Information about designated sites and species