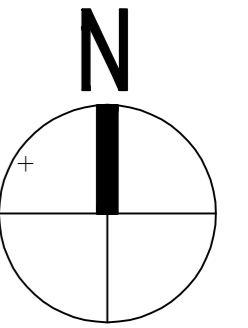


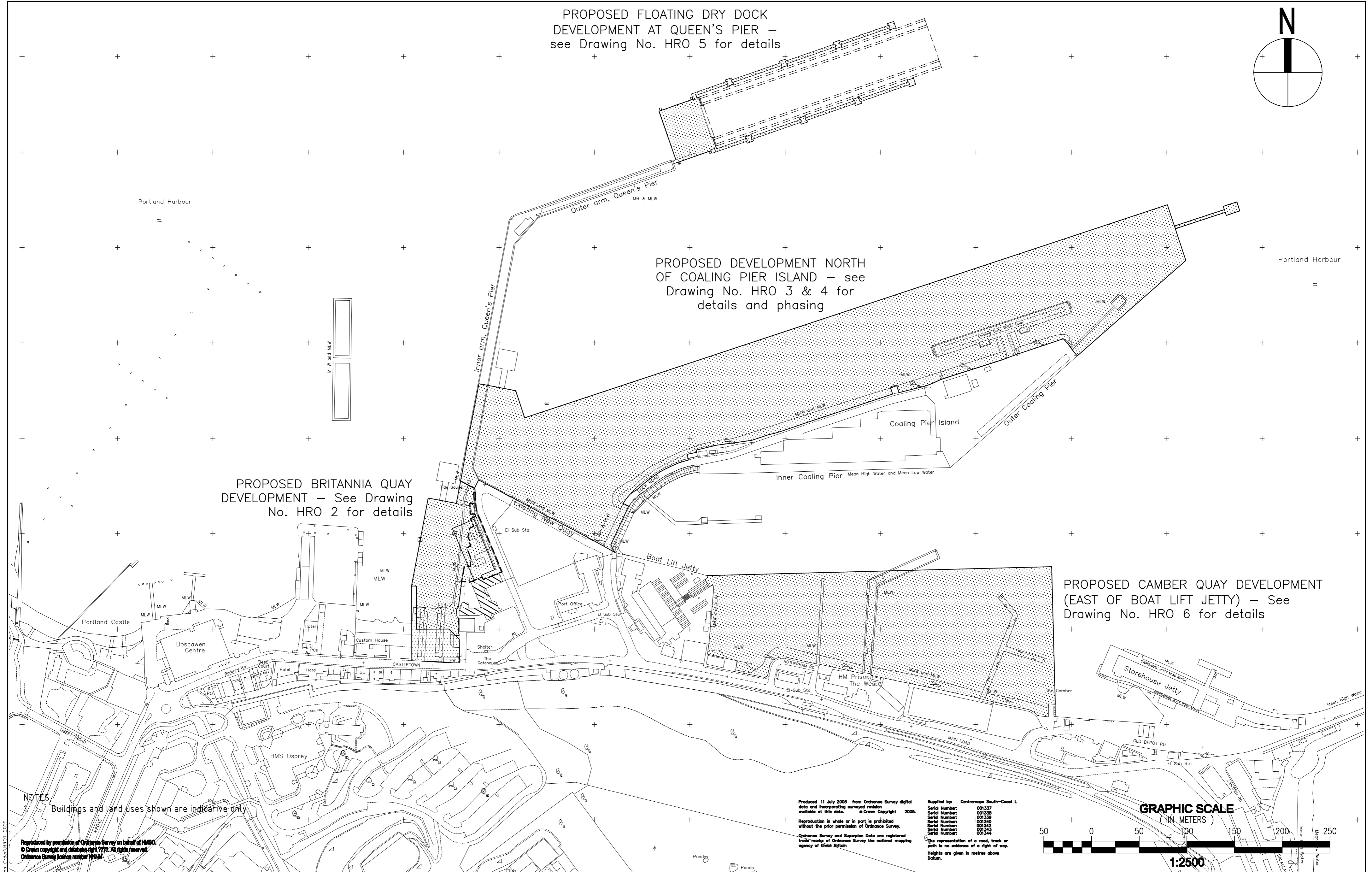
PROPOSED FLOATING DRY DOCK  
DEVELOPMENT AT QUEEN'S PIER –  
see Drawing No. HRO 5 for details



PROPOSED DEVELOPMENT NORTH  
OF COALING PIER ISLAND – see  
Drawing No. HRO 3 & 4 for  
details and phasing

PROPOSED BRITANNIA QUAY  
DEVELOPMENT – See Drawing  
No. HRO 2 for details

PROPOSED CAMBER QUAY DEVELOPMENT  
(EAST OF BOAT LIFT JETTY) – See  
Drawing No. HRO 6 for details



NOTES  
1 Buildings and land uses shown are indicative only

Reproduced by permission of Ordnance Survey on behalf of HMSO.  
© Crown copyright and database right 1997. All rights reserved.  
Ordnance Survey licence number 100017700

Produced 11 July 2005 from Ordnance Survey digital  
data and incorporating surveyed revision  
available at this date. © Crown Copyright 2005.  
Reproduction in whole or in part is prohibited  
without the prior permission of Ordnance Survey.  
Ordnance Survey and Superplan Data are registered  
trade marks of Ordnance Survey the national mapping  
agency of Great Britain

Supplied by: Centremaps South-Coast L  
Serial Number: 001337  
Serial Number: 001338  
Serial Number: 001339  
Serial Number: 001340  
Serial Number: 001341  
Serial Number: 001342  
Serial Number: 001343  
Serial Number: 001344  
The representation of a road, track or  
path is no evidence of a right of way.  
Heights are given in metres above  
Datum.

GRAPHIC SCALE  
(IN METERS)



REVISIONS				
NO.	DATE	SUBJECT	DRAWN BY	CHECKED BY

DRAWN BY JAW	DRG. NO. <b>HRO 1</b>
CHECKED BY DAH	DATE 25/02/2010
APPROVED BY PPG	SCALE: 1:2500@A2