

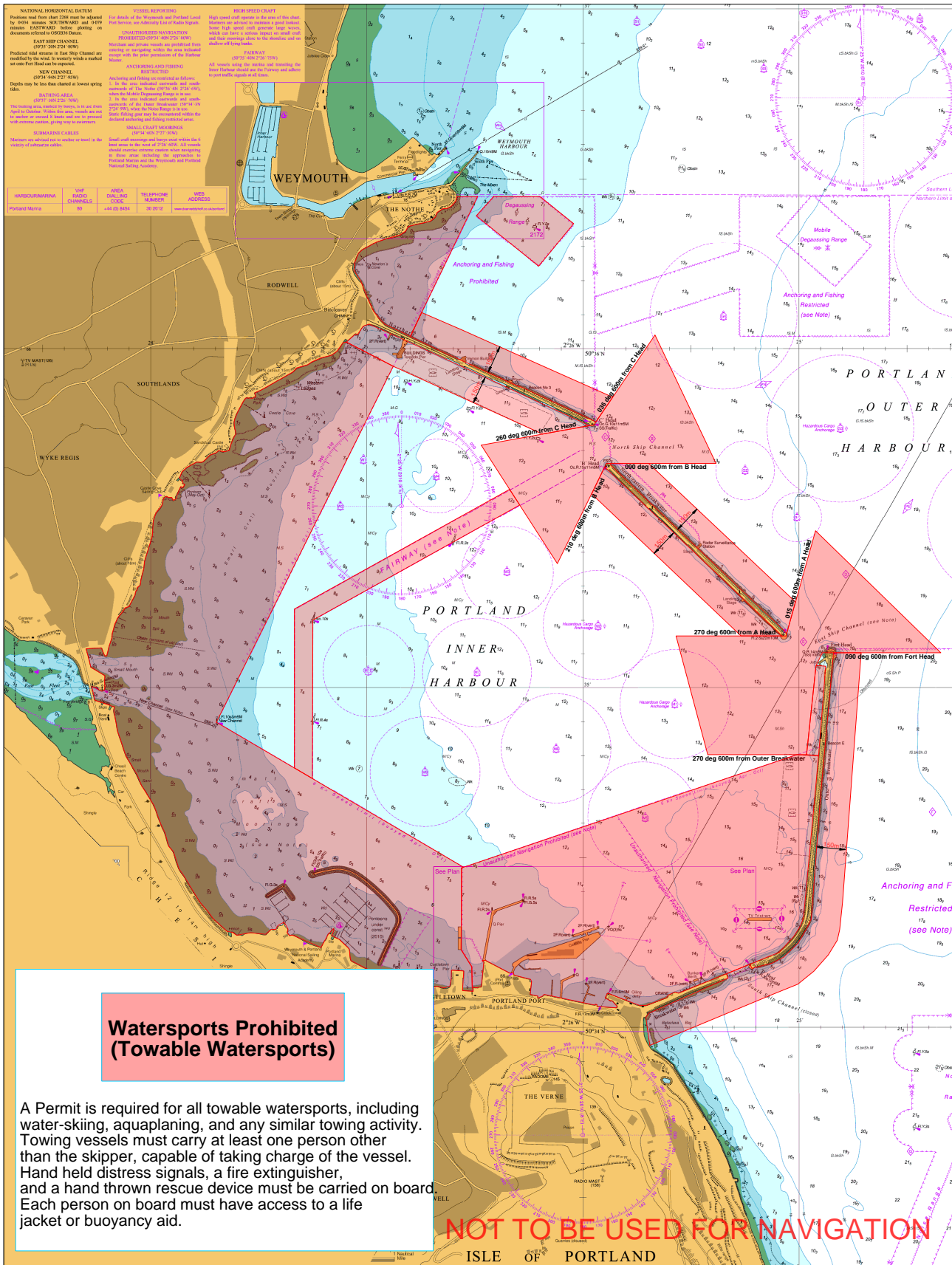


PORTLAND HARBOUR AUTHORITY

Portland Harbour Towable Watersports Restrictions



PORTLAND HARBOUR AUTHORITY



NATIONAL HORIZONTAL DATUM
Positions read from chart 2000 must be adjusted by 800M (minus 800 METERS) and 0070 (minus 0.70 METERS) EASTWARD before plotting on documents referred to in this notice.

EAST SIDING CHANNEL
(SP77 200 274 900)
Prohibited shall advance in East Siding Channel as notified by the chart. It is severely prohibited to set out into Fort Head can be expected.

NEW CHANNEL
(SP74 942 227 900)
Depth may be less than charted at lowest spring tide.

REMARKS
(SP77 200 274 900)
The towing vessel must be in the area, south side of the anchor or mooring if there is no 100m or 150m ground line, giving way to navigation.

REMARKS
(SP74 942 227 900)
Medium and small craft are to be in the vicinity of industrial cables.

HYDROGRAPHIC	NO. OF SHEETS	AREA COVERED	TELEPHONE NUMBER	WEB ADDRESS
Portland Harbour	80	444 00 8484	30 20 12	www.portland-ha.com

Watersports Prohibited (Towable Watersports)

A Permit is required for all towable watersports, including water-skiing, aquaplaning, and any similar towing activity. Towing vessels must carry at least one person other than the skipper, capable of taking charge of the vessel. Hand held distress signals, a fire extinguisher, and a hand thrown rescue device must be carried on board. Each person on board must have access to a life jacket or buoyancy aid.

NOT TO BE USED FOR NAVIGATION