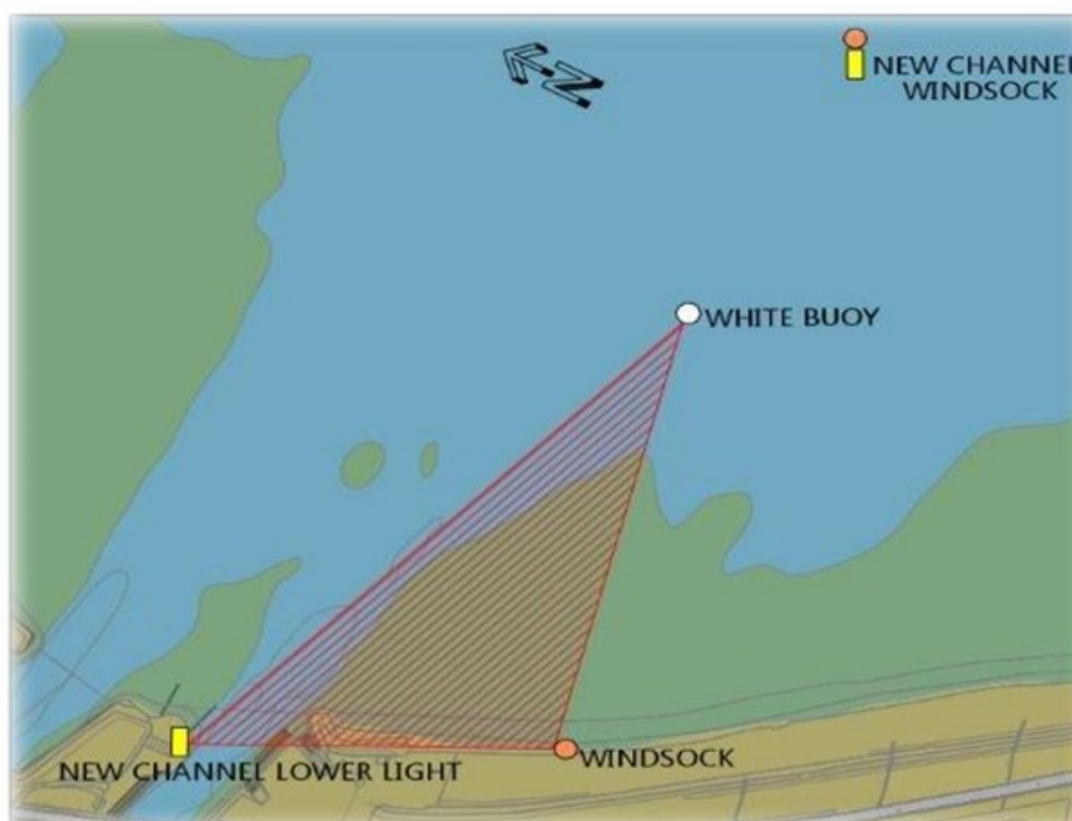


# PORTLAND HARBOUR AUTHORITY LIMITED

## GENERAL DIRECTION

### SEASONAL EXCLUSION ZONE FOR WINDSURFERS & KITESURFERS

**Exclusion Zone is in effect from April - September**



### GENERAL DIRECTION

No 1 of 2018

#### Seasonal Exclusion Zone for Windsurfers & Kitesurfers

1. This Direction is given to any person having or taking command, charge, management or conduct for the time being of a Windsurfing board or any surf board or similar vessel powered by a kite.
2. An Exclusion Zone has been established adjacent to Hamm Beach in the vicinity of Ferrybridge Marine & Billy Winters Cafe.
3. No person shall operate a Windsurfing board or any surf board or similar vessel powered by a kite in the Exclusion Zone when the Orange Windsock in position N50°34.879 W002°28.158 (Ferrybridge Marine carpark) is displayed, usually June to September based on levels of all activities that may take place within this area.
4. A second windsock will be displayed on New Channel Beacon in position 50°34.890N 002°27.700W
5. The Exclusion Zone means the sea area contained within the following imaginary lines: -  
From a point on the shore at 50°34.879N, 002°28.158 W (Ferrybridge Windsock)  
to a point at 50°34.885N, 002°27.899W (marked by a white buoy)  
Thence to a point on the shore at 50°34.994N 002°28.224W (New Channel Lower Leading Light)
6. Failure to comply with this Direction is an offence and offenders may be prosecuted.

Chief Executive  
Portland Harbour Authority Limited  
1<sup>st</sup> January 2018

*Owners, Operators, Agents, Masters, Yacht Club and recreational sailing organisations are requested that this Direction is made known to all persons that use Portland Harbour*