



PORTLAND HARBOUR AUTHORITY LIMITED



Local Notice to Mariners

No 14/2022(T)

SONAR & TOWING TRIALS No 3

Trial Dates	1 st May to 31 st May 2022
Trial Times	Daylight Hours
Trial Location	Portland Inner & Outer Harbour and Weymouth Bay
Trials Vessel	RNMB HUSSAR & HALCYON, ARCIMS 11 & 12
Support Vessels	SAFETY VESSEL

ATLAS ELEKTRONIK UK (AEUK) will be conducting Sonar & Towing Trials from 1st May to 31st May 2022

The trial will involve equipment attachment and streaming in the areas highlighted on the chart extract below and beyond the harbour limits.

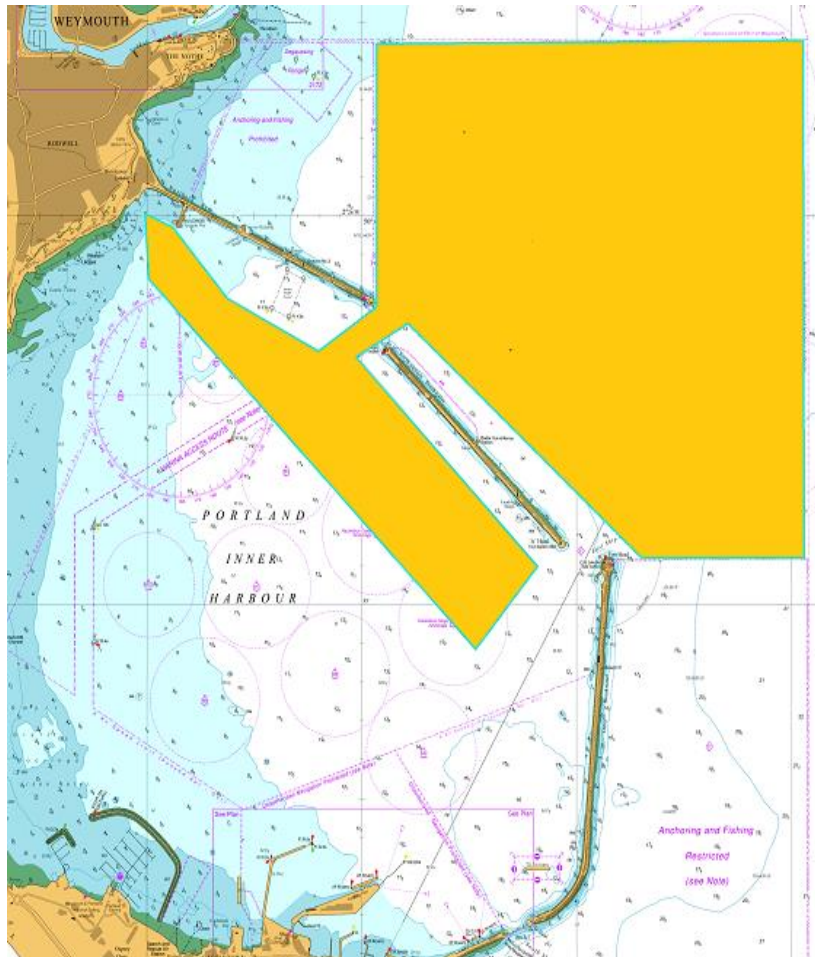
The area of operation within Port Limits is shown on the chart below.

During the trials period, the designated trial vessel(s), complete with various length tows (to a maximum length of 200m), will be transiting to, and operating within, the area highlighted. Operations in the Inner Harbour will be limited to a 50m tow length. Longer tow lengths will be encountered in the Inner Harbour, when vessels transit from the Torpedo Pier to exit/enter the Inner Harbour using the North Ship Channel.

Restricted in Ability to Manoeuvre Shapes will be displayed from the platform.

A SAFETY VESSEL, usually "BINCLEAVES RIB", will be present at all times when towing operations are occurring within Portland Harbour Limits and Weymouth Bay.

VHF channel 68 will be the working channel.



At key times, during operations involving the platforms, the SAFETY VESSEL will transmit SÉCURITÉ warnings on Channel 74.

Mariners are requested to give all vessels a wide berth during operations.

This Notice is issued under the powers vested by the Portland Harbour Revision Order 1997.

Captain M Shipley
General Manager (Marine)
25th April 2022

Owners, Agents, Yacht Clubs and Recreational Sailing Organisations should ensure that the contents of this notice are made known to the Masters or persons in charge of their vessels or craft.