



PORTLAND HARBOUR AUTHORITY LIMITED

Local Notice to Mariners

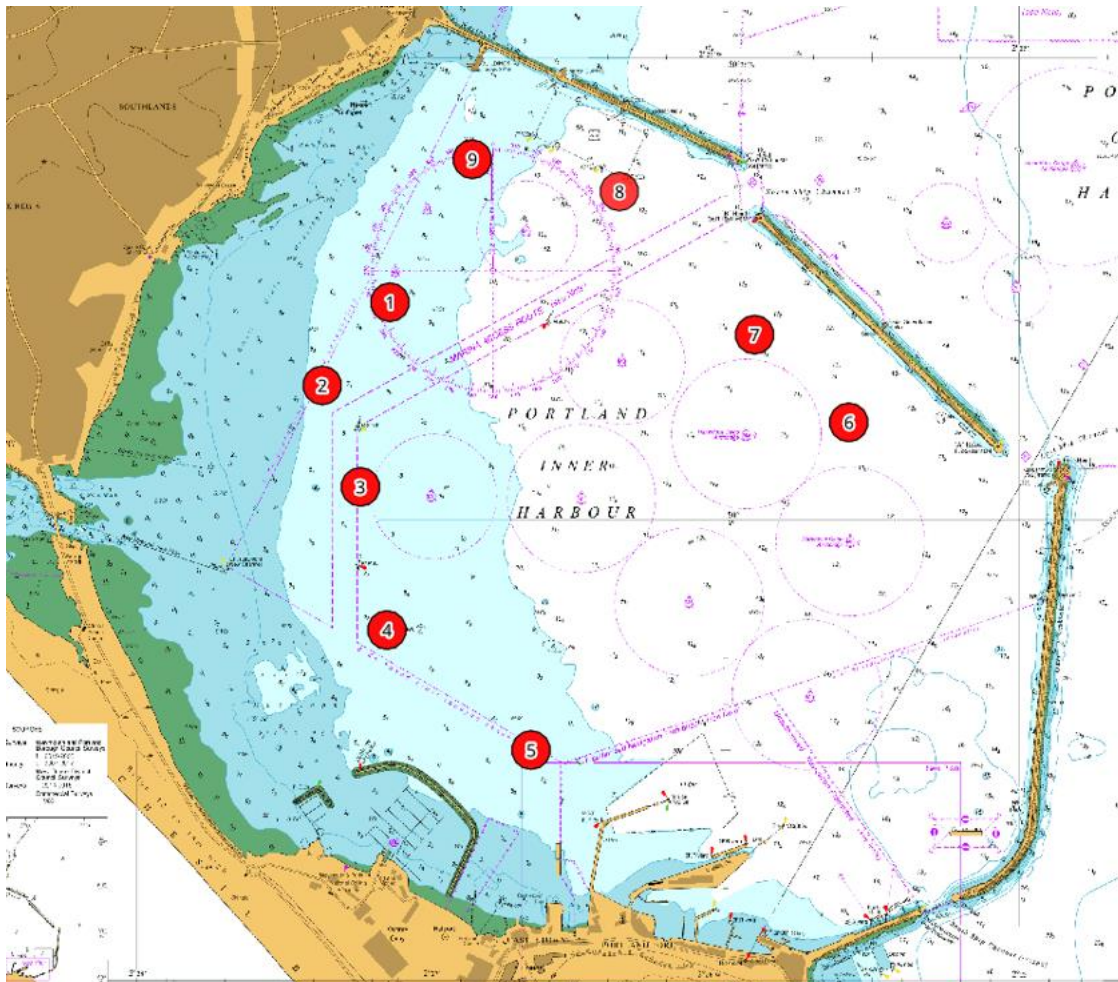
No 27/2022



CASTLE COVE SAILING CLUB RACING MARKS

Castle Cove Sailing Club Racing Marks are to be established in the following positions. All buoys are unlit and described below

No 1 Yellow Can Buoy Black spherical top mark	50 35.47 N	2 27.14 W
No 2 Yellow Can Buoy Black spherical top mark	50 35.29 N	2 27.37 W
No 3 Yellow Can Buoy Black spherical top mark	50 35.07 N	2 27.24 W
No 4 Yellow Can Buoy Black spherical top mark	50 34.76 N	2 27.15 W
No 5 Yellow Can Buoy Black spherical top mark	50 34.50 N	2 26.66 W
No 6 Yellow Can Buoy Black spherical top mark	50 35.21 N	2 25.58 W
No 7 Yellow Can Buoy Black spherical top mark	50 35.40 N	2 25.90 W
No 8 Yellow Can Buoy Black spherical top mark	50 35.71 N	2 26.36 W
No 9 White Can Buoy Black spherical top mark	50 35.78 N	2 26.86 W



All mariners are advised to maintain a good lookout when approaching any of the above positions

This Notice is issued under the powers vested by the Portland Harbour Revision Order 1997.

Captain M Shipley
General Manager (Marine)

14th September 2022

Owners, Agents, Yacht Clubs and Recreational Sailing Organisations should ensure that the contents of this notice are made known to the Masters or persons in charge of their vessels or craft.